



surveying & mapping solutions  
BOTH ROUTINE AND COMPLEX CHALLENGES

Pipeline

# Accurate Surveys for your needs



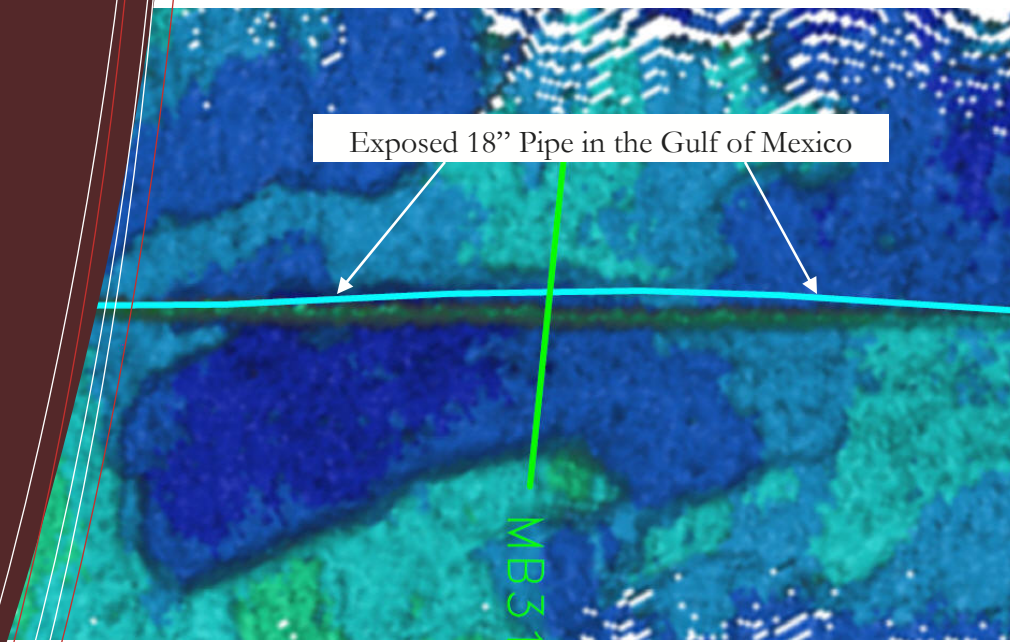
Having well equipped surveyors, field crews, and office personnel enables EMC to not only provide our clients with traditional surveying services but also provide them with specialty surveying services such as

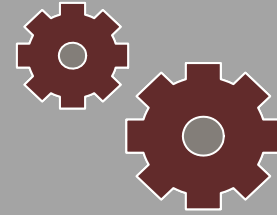
## Pipeline Surveying

Just as it is with any type of surveying project EMC understands that the most important aspect is

*location, location & location*

EMC has performed pipeline construction surveys including design, construction staking and as-built surveys. In addition, EMC has managed many right of way and easement surveys for a number of pipeline companies nationwide.





## CUSTOM SOLUTIONS

As a multidiscipline surveying and mapping company, we have the ability to use any survey technology to deliver the right solution to fulfill our client's needs



## PROJECT STATUS UPDATES

EMC, Inc. can be found on the World Wide Web with just a simple click. Many of our clients get project information such as project updates, progress, and final submittal notice.



Please visit our website for more information about EMC and our capabilities at:  
[www.emcsurvey.com](http://www.emcsurvey.com)

When locating existing pipelines, EMC uses the most efficient technique to locate the pipeline. Once EMC's professional field crews have located the pipeline we capture point locations using our state-of-the-art equipment. From these point files we provide our clients with highly accurate maps and profile drawings.

## past project performed for:

- Shell Pipeline Company
- Chevron
- Exxon Mobil Corporation
- Loop, LLC
- Justiss Oil and Gas
- Enterprise
- Central Louisiana Energy Pipeline Co, LLC

## surveying solutions that work for you

both routine and complex challenges

- Boundary/ Cadastral Surveys
- Topographic / ATLA / ACSM Surveys
- Right of Way / Easement / Route Surveys
- Planimetric Location Surveys
- Construction Surveys
- Design Surveys
- As Built Surveys
- Aerial Mapping (Ground Control)
- Metes and Bounds Survey
- Data Collection (GIS)
- Horizontal & Vertical Control (1st, 2nd, and 3rd Order)
- Subdivision Platting
- Emergency Response Surveying Services
- Pipeline Construction Surveys
- Pipeline As-Built Surveys
- Pipeline Location Surveys
- Pipeline Depth of Cover Surveys
- Bridge Inspection Surveys
- Ports and Waterways Surveys
- Dredging Surveys
- Single Beam/Dual Frequency
- Multibeam
- Sub-Bottom
- ADCP
- Beach Renourishment Surveys
- Telecommunication Surveys

# Expect

## Experience

## Professional

## Performance

## Dedication

## Team Work

## Most of all

# Quality

Everything you can expect to find when it comes to finding a high quality surveying provider can be found at EMC, Inc. EMC, Inc. gives all the credit of where we are today to the dedication of our personnel who take pride in delivering the highest quality surveying service to our clients. There are many bigger surveying firms, but none with the dedication and quality that EMC, Inc. offers



If your particular surveying service needed is not listed on this brochure, please feel free to contact us. EMC, Inc. offers several services which are not shown in this brochure.



Corporate Office  
2472 Sunset Drive  
Grenada, MS 38901  
Phone: 662.226.5166  
Fax: 662.226.5170  
Toll Free: 1.877.226.0362  
Web Site: [www.emcsurvey.com](http://www.emcsurvey.com)