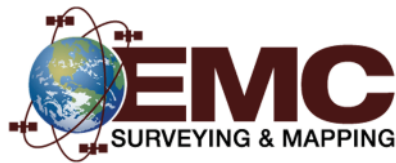




HYDROGRAPIC AND LAND SPECIALISTS



Boundary/ Cadastral Surveys

Points that Really Matter

Typically, EMC performs boundary/cadastral surveys in the southeast; however, we have experience in these surveying services throughout the U. S. Having the experience and knowledge of record researching, analytical thinking and applying physical evidence gained in the field, is why both government and private agencies turn to EMC for their boundary/cadastral surveying services. Ours services include, but are not limited to: section retracements, Right of Way (ROW), title (ALTA) and subdivision layout & re-staking surveys.

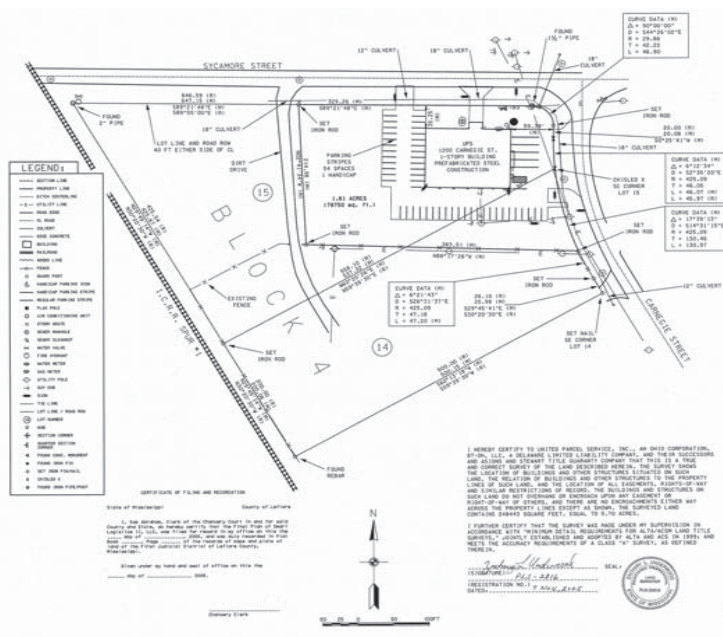
EMC has performed boundary & cadastral surveys in both “public domain” and “metes and bounds” states.

Processes that Work

- Research all records, including adjoiners
- Deeds are plotted & checked for closure, gaps, overlaps, etc.
- Aerial photography is used as a guide to enable reconnaissance of sections corners or prominent metes and bounds corners.
- Exhaustive search is conducted for all boundary corners as well as ties (Additionally, all encroachments, right-of-ways and/or easements, and existing infrastructure are located).
- All corners are evaluated to their computed positions, based upon found monumentation and record research, and a determination is made as to whether the corner is “held” or not.
- Corners are set, mindful of any scale and/or rotation that may need to be applied to best “follow the footsteps” of the original surveyor.

Clients Include

- USACE, Norfolk - RCI (Residential Community Initiative) 17 Military Bases for USACE, Norfolk
- USACE, Norfolk - PAL (Privatization of Army Lodging) 8 Military Bases for USACE, Norfolk
- USACE, Norfolk - UPH (Unaccompanied Personal Housing) 3 Military Bases for USACE, Norfolk
- USFW - Panther Swamp, Red River WMA, Grand Cote
- NRCS Mississippi and Florida- 90+ surveys
- MDOT (Mississippi Dept. of Transportation)
- UPS (United Parcel Service)
- Traditions LLC- a private development company
- Numerous other Government and Private entities



Offices in Mississippi, Louisiana, Texas and Florida

Corporate Office: 2472 Sunset Drive, Grenada, MS 38901 • Phone: 662.226.5166 • Toll Free: 1.877.266.0362 • www.emcsurvey.com



Topographic Surveys

Accurately Measuring the World

EMC, Inc. has extensive GPS and automated Total Station topographic surveying experience. EMC gathers all natural and man made features of the earth's surface using our GPS and/or automated Total Station systems. Types of surveys performed include first, second and third order horizontal and vertical control surveys, automated (Total Station / Data Collector) GPS topographic surveys. We have performed plan and specification surveys and site condition surveys in support of design and construction for many government and private entities.

All topographic surveys are performed with Trimble R8 GNSS and/or Topcon one-second total stations with data collectors to reduce field errors and provide our clients with an efficiently produced, professional product. All data gathered for our clients can be presented to them in a format compatible with their preferred software.

Collecting Points for

- Beaches and Breakwaters
- Dams
- Bridges
- Grade Control Structures
- Drainage Ditches and Canals
- Rivers
- Levees and Embankments
- Floodways
- Recreational Areas
- Channel Areas
- Industrial Parks
- Housing Projects
- Commercial Development
- Military Installations
- Urban Highway Route Studies
- Airport Location Studies
- Chemical Plant Mapping
- Utility Transmission Route Studies



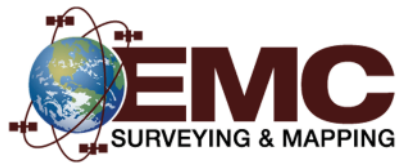
Recent Projects

- Mississippi River Levee Profiles for the USACE, New Orleans
- Homeplace Borrow Pit for the USACE, New Orleans
- IHNC Surveys for USACE New Orleans
- Eight PAL (Privatization of Army Lodging) facilities for USACE, Norfolk District and Actus Lend Lease Company



Offices in Mississippi, Louisiana, Texas and Florida

Corporate Office: 2472 Sunset Drive, Grenada, MS 38901 • Phone: 662.226.5166 • Toll Free: 1.877.266.0362 • www.emcsurvey.com



Hydrographic Surveys

Automated Systems

EMC has hydrographic surveying experience ranging from 1982 to the present on major waterways, oceans, beaches and bays from the San Francisco Bay to the U.S. Virgin Islands. We have all necessary office and field equipment to provide our client with automated GPS hydrographic surveys. All hydrographic surveys are planned and checked by our Certified Hydrographic Surveyors.

EMC has been on the leading edge of hydrographic technologies for over 30 years. EMC owns three multibeam systems, which can be mounted on any one of our surveying vessels. Each system is equipped with state-of-the art Inertial GPS system POS MV for positioning. These systems can also be easily mobilized onto a vessel of opportunity if needed.

Services Provided

- Multibeam
- Sidescan Sonar
- Single Beam Dual Frequency
- Magnetometer
- ADCP
- RTK Tides



Knowledge & Experience

EMC has completed hydrographic surveys on numerous waterways, rivers & oceans :

- Mississippi River
- Atchafalaya River
- Red River
- Black River
- Yazoo River
- Ouachita River
- Arkansas River
- Alabama River
- St. Francis River
- Wolf River
- Loosahatchie River
- Rio De La Plata River
- Kissimmee River
- St. Lucie Canal
- Pacific Ocean
- Atlantic Ocean
- Caribbean Sea
- Gulf of Mexico

We have also performed pre and post annual revetment construction surveys on the Mississippi and Red Rivers.

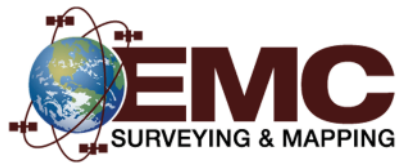
Our multibeam experience includes, but is not limited to:

- Mississippi River Full Coverage Survey
- Miami Harbor Debris Survey
- Gulf of Mexico Debris Mapping
- Key West Dredging Survey
- Gulf of Mexico Pipeline Inspections
- Mobile Bay Yellowhammer Pipeline



Offices in Mississippi, Louisiana, Texas and Florida

Corporate Office: 2472 Sunset Drive, Grenada, MS 38901 • Phone: 662.226.5166 • Toll Free: 1.877.266.0362 • www.emcsurvey.com



Geophysical Surveys

Surveying Solutions that Work

Being well equipped with the latest technologies, EMC provides high quality marine geophysical surveys that meet our client's needs. Whether it's to provide depth of cover of a pipeline or a full sidescan, multibeam, sub-bottom, magnetometer bathymetry survey of a ocean's bottom, EMC has the trained staff, the technologies, and the experience to handle any geophysical surveying and mapping project.

Technology at Work for You

- Side-Scan Sonar
- Magnetometer
- Sub-Bottom Profiler
- Multibeam
- ADCP



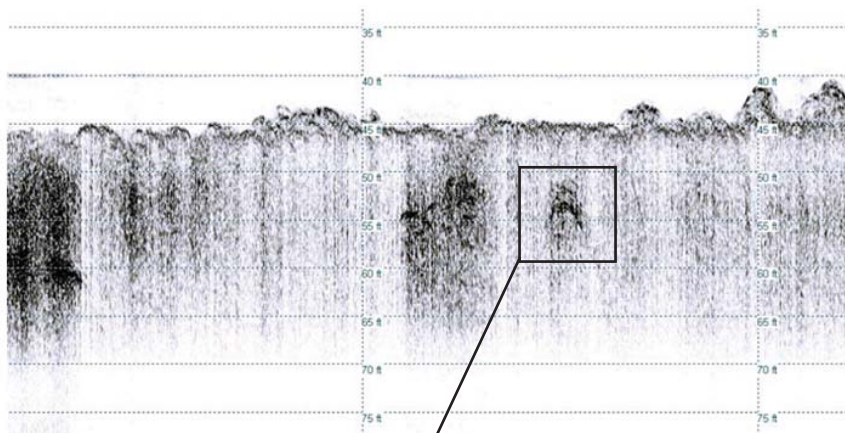
Experience Includes but not Limited to

EMC has completed geophysical surveys in numerous waterways, rivers & oceans:

- Gulf of Mexico Debris Mapping (Client NOAA)
- Barge Location Survey (Client USACE, New Orleans)
- U. S. Coast Guard Station Miami (Client USCG)
- U.S. Coast Guard Station Venice (Client USCG)
- Gulf of Mexico Pipeline Inspections (Client Shell Pipeline)
- Mobile Bay Yellowhammer Pipeline (Client Shell Pipeline)
- Mississippi River Barge Location Surveys (Client USACE Memphis)



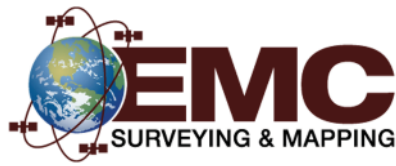
Sunken Vessel located a USCG, Miami



18" Pipe Anomaly located in Calcasieu River, LA

Offices in Mississippi, Louisiana, Texas and Florida

Corporate Office: 2472 Sunset Drive, Grenada, MS 38901 • Phone: 662.226.5166 • Toll Free: 1.877.266.0362 • www.emcsurvey.com



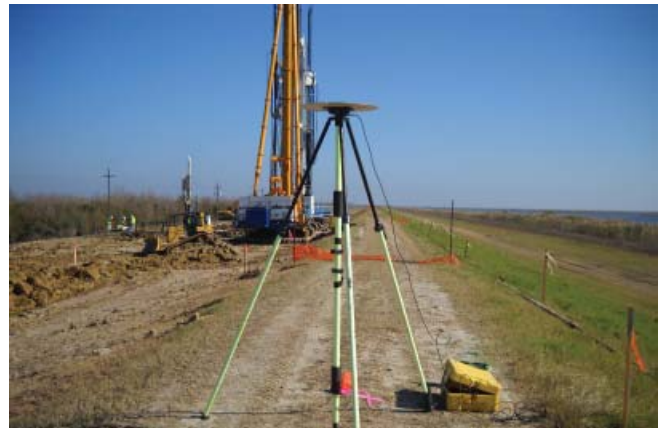
Construction Surveys

Guiding Clients Through All Phases of Construction

On a regular basis, EMC's team of professionals performs surveying and mapping services for construction projects. EMC has experienced in all the facets of construction surveying and mapping such as design, layout, as-built, quantity and control surveys. These surveys are typically done with RTK/total stations or automated hydrographic systems. These methods of data collection provides EMC with a fast, efficient and accurate surveys allowing us to complete the largest of projects in a timely fashion and on budget for our clients.

Experienced, Efficient & Accurate

- Levee Enlargements Surveys
- Revetment, Dike and Jetty Construction Surveys
- Control Structure Construction Surveys
- Lock and Dam Construction Surveys
- Minor Levee Constructions and Repairs Surveys
- Building Structure Surveys
- Road and Bridge Construction Surveys
- Pipeline Construction Surveys
- Telecommunication Construction Surveys



Recent Clients Include:

- Bertucci Contracting Corporation
- Manson Construction Company
- Manson Gulf
- Kiewit Construction
- Gulf IntraCoastal Constructors
- Greenhorne & O'Mara
- Black & Veatch Corporation
- Robinson Construction
- Centex
- Kiewit Massman Taylor Construction
- USACE, New Orleans
- USACE, Vicksburg
- USACE, Jacksonville
- USACE, Mobile
- USACE, Memphis
- USACE, Norfolk
- USACE, St. Louis



Offices in Mississippi, Louisiana, Texas and Florida

Corporate Office: 2472 Sunset Drive, Grenada, MS 38901 • Phone: 662.226.5166 • Toll Free: 1.877.266.0362 • www.emcsurvey.com



GIS Services

Data Management, Storage and Retrieval

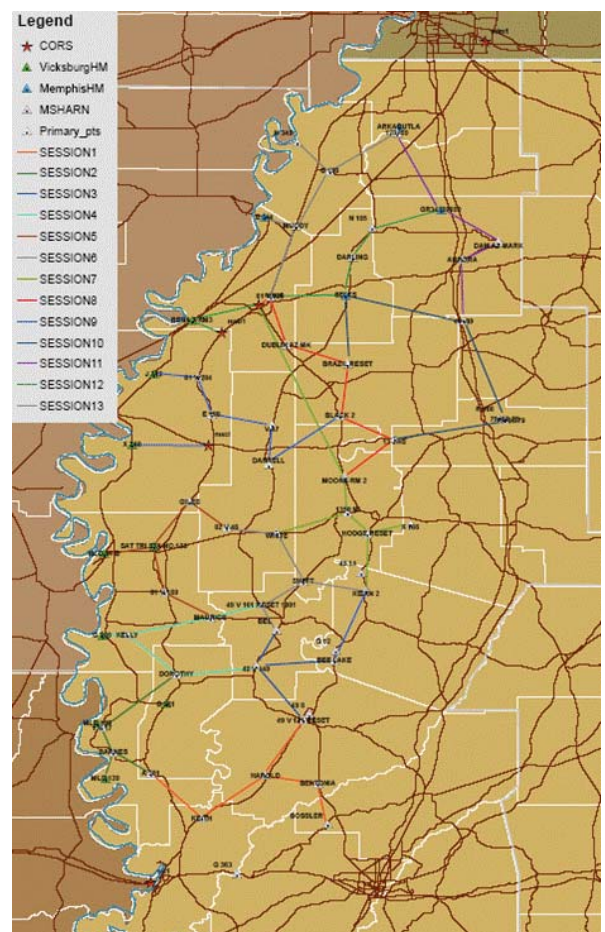
EMC's GIS services are based on the concept of enhancing our surveying and mapping products by providing a new avenue to data management, storage and retrieval. We implement these services into our daily workflows and routines, and have produced high quality GIS products for many private and government entities. Staying on the leading edge of technology in both hardware and software allows EMC to remain one of the elite survey, mapping and GIS firms in the South.

EMC is currently producing GIS projects using ESRI's suite of products that utilizes all industry standard GIS and CADD formats. We are implementing ESRI's ArcMap application and technology into our workflows and submittals to give our clients a multi-use mapping product.

Our GIS service enables our clients to extract data, combine the information in new ways, and display as desired by the user. EMC's GIS Services allow our clients to have a valuable planning tool at their finger tips.

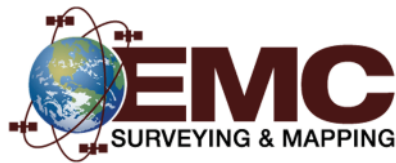
Recent Experience

- Mississippi Valley Division Flood Control and Navigation Book for the Mississippi River
- Memphis Comprehensive Survey and Hydrographic Book for the Mississippi River
- Mississippi River Levee and Tributary (MRL&T) Supplemental Environmental Impact Statement (EIS)
- General Hydrographic Survey of the Memphis Districts
- Greenwood, MS GIS
- White River Photo Mosaic and Data Sheet Extraction



Offices in Mississippi, Louisiana, Texas and Florida

Corporate Office: 2472 Sunset Drive, Grenada, MS 38901 • Phone: 662.226.5166 • Toll Free: 1.877.266.0362 • www.emcsurvey.com



Laser Scanning

Fully Linear, Unidirectional & Parallel Scans

EMC's new V-Line 3D Terrestrial/Mobile Laser Scanner provides our clients with high speed, non-contact data acquisition using a narrow infrared laser beam on a fast scanning mechanism. This system provides our clients with high-accurate laser ranging that is based upon a unique echo digitization and full waveform processing, this allows EMC to achieve superior measurement capability even under adverse atmospheric conditions and the evaluation of multiple target echoes. The line scanning mechanism is based upon the fast rotating multi-faceted polygonal mirror, which provides fully linear, unidirectional and parallel scan lines. EMC's laser scanner is a compact and lightweight surveying instrument, mountable in any orientation and even under limited space conditions.

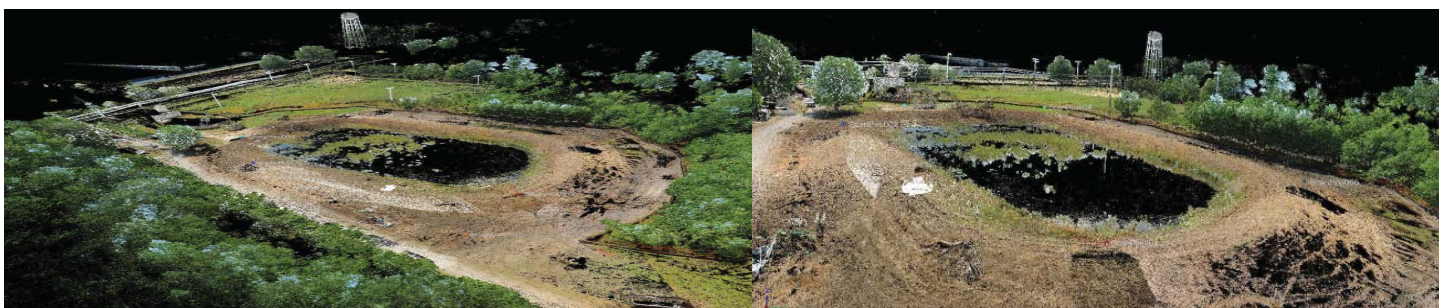
Innovative Benefits

- Terrestrial/Mobile Laser Scanning
- Full Waveform Processing, (1 beam equals 16 returns)
- High Speed Data Acquisition
- Wide Field of View
- Accurate High Precision Ranging
- Multiple Target Capability
- Superior Measurement
- Digital Imagery
- Integrated Inclination Sensor
& Laser Plummet
- GPS Receiver with Antenna
- Various Interfaces



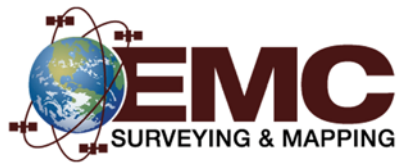
EMC's Applications

EMC utilizes our laser scanner for surveying and mapping of roadways, bridges and rail corridors (e.g. route inventory, clearance evaluation, rail gauge determination, etc.), waterways, ports, and harbors (e.g. river banks, jetties, cliffs, etc.) as well as extended urban and rural areas. EMC also uses this system for surveying and engineering measurements, as-built surveying, road and bridge modeling and any civil engineering project where our clients need fast accurate data.



Offices in Mississippi, Louisiana, Texas and Florida

Corporate Office: 2472 Sunset Drive, Grenada, MS 38901 • Phone: 662.226.5166 • Toll Free: 1.877.266.0362 • www.emcsurvey.com



Oil & Gas Surveys

Gathering Insightful Information

EMC provides our clients in the oil and gas industry with pinpoint surveying and mapping services. By accurately and efficiently gathering the right data, EMC provides our clients with the information that affects well site position and construction. From providing the physical features of the terrain to locating hazardous structures, EMC maintains the professional staff and the state-of-the-art equipment needed to handle any surveying and mapping project for our oil and gas industry clients.

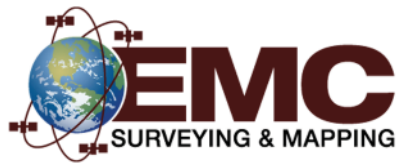
Gathering Data for

Drill Site Location Surveys
Well Site Location Surveys
Well Site Construction Surveys
As Built Surveys
Area Computations Surveys
Pipeline and Well Detection Surveys
Right-of-Way Surveys
Easement Surveys
Acquisition Surveys
Alignment Surveys
Boundary Surveys
Topographic Surveys
Map Preparation and Reproduction



Offices in Mississippi, Louisiana, Texas and Florida

Corporate Office: 2472 Sunset Drive, Grenada, MS 38901 • Phone: 662.226.5166 • Toll Free: 1.877.266.0362 • www.emcsurvey.com



Pipeline Surveys

Location, Location, & Location

EMC has extensive experience surveying oil and gas pipelines. Whether it is a small project or a project that will require multiple phases and multiple years, EMC has the equipment, the knowledge and the experience to manage any pipeline survey.

EMC has performed pipeline construction surveys including design, construction staking and as-built surveys. In addition, EMC has managed many right of way and easement surveys for a number of pipeline companies nationwide.

When locating existing pipelines, EMC uses the most efficient technique to locate the pipeline. Once EMC's professional field crews have located the pipeline we capture point locations using our state-of-the-art equipment. From these point files we provide our clients with highly accurate maps and profile drawings.

Leading the Way in:

- Pipeline Construction Surveys
(design, staking, and as-built)
- Pipeline Location Surveys
- Pipeline Depth of Cover
- Right of Way/Easement/Route Survey



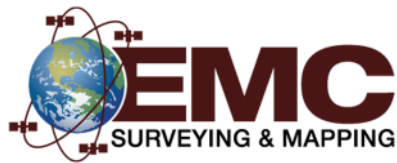
Past Project Performed for:

- Shell Pipeline Company
- Chevron
- Exxon Mobil Corporation
- Loop, LLC
- Justiss Oil and Gas
- Enterprise
- Central Louisiana Energy Pipeline Co, LLC



Offices in Mississippi, Louisiana, Texas and Florida

Corporate Office: 2472 Sunset Drive, Grenada, MS 38901 • Phone: 662.226.5166 • Toll Free: 1.877.266.0362 • www.emcsurvey.com



Transportation Surveys

Surveying Today Better Transportation Tomorrow

EMC provides surveying and mapping services for the transportation industry. We offer turnkey surveying solutions for the issues facing departments of transportation, city and county road systems, bridges, airports, railroads, ports etc. Our services, for both public and private sectors, range from new and existing roadway extension and rehabilitation to fully automated hydrographic surveys of for bridges.

Better Transportation Through Our Services

- Construction Layout & Staking
- Planimetric & Topographic Surveys
- Boundary Surveys
- Right-of-way Surveys
- Section Line Retracement Surveys
- Automated Hydrographic Surveys
- Drainage Surveys
- Route Surveys
- Geodetic Control Surveys
- Bridge Surveys
- Airport Surveys



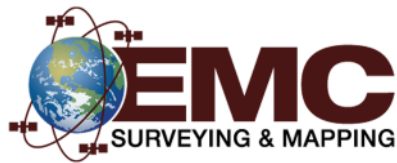
Recent Experience Includes, but not Limited to:

- Re-establishing Right-of-Way & Adjacent Boundaries Survey along Highway 49 in Greenwood, MS for MDOT
- Re-establishing Right-of-Way & Adjacent Boundaries Survey along Highway 305 south of Olive Branch, MS for MDOT
- Planimetric & Topographic Survey along Highway 448 between Indianola and Shaw, MS for MDOT
- First order level, GPS Survey and Monumentation in south MS for MDOT



Offices in Mississippi, Louisiana, Texas and Florida

Corporate Office: 2472 Sunset Drive, Grenada, MS 38901 • Phone: 662.226.5166 • Toll Free: 1.877.266.0362 • www.emcsurvey.com



Telecommunication Surveys

Going the Distance

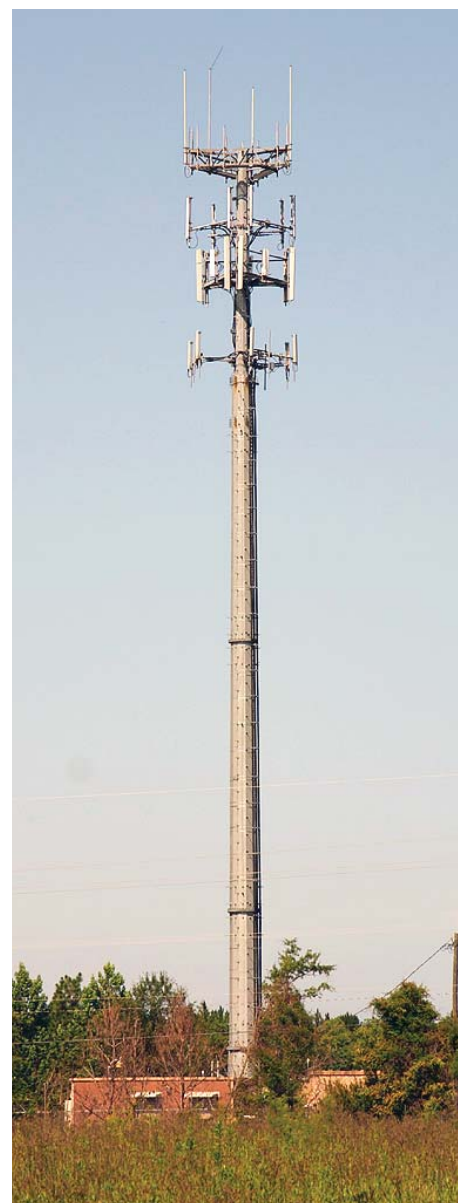
Telecommunication surveys encompass a broad spectrum of surveying services, which is why many companies seek the services of EMC to manage and perform these surveys. EMC has the knowledge, the experience, the staff and the equipment to handle any surveying services needed by the telecommunication industry.

Range of Services

- Boundary Surveys
- Site Construction Surveys
- Right of Way / Easement
- Cellular Tower Surveys
- FAA 2C and 1A Certifications
- Topographic Surveys
- As-Built Surveys
- Tower Surveys
- ALTA Surveys
- Title Reviews

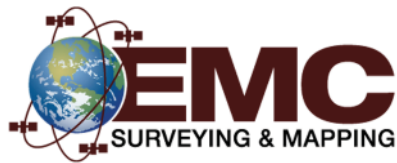
Recent Experience Includes

- Multiple Cell Tower Site Surveys
 - Cellular South
 - AT&T
- Detailed Survey of all Telecommunications at:
 - Fort Polk
 - Fort Hood
 - Fort Leavenworth
 - Fort Myer
 - Fort Riley
 - Fort Rucker
 - Fort Sam Houston,
 - Fort Shafter
 - Fort Still
 - Redstone Arsenal
 - Yuma Proving Ground
- Underground Telecommunication Survey techniques using Ground Penetrating Radar were used at U.S. Coast Guard Station Belle Chasse and New Orleans



Offices in Mississippi, Louisiana, Texas and Florida

Corporate Office: 2472 Sunset Drive, Grenada, MS 38901 • Phone: 662.226.5166 • Toll Free: 1.877.266.0362 • www.emcsurvey.com



Emergency Response Surveys

When Time Matters

EMC understands that in some situations there is no time to waste. From natural disasters to locating sunken vessels or pipeline depth of burial surveys, EMC has been called upon to quickly provide our surveying and mapping services. With well equipped mobile surveying teams located throughout the southeast, EMC can respond quickly, collect accurate data and provide the needed information to the client in a matter of hours.

Rapid Deployment, Accurate Data Collection for Any Situation

- Search and Recovery Surveys
- Topographic Surveys
- Construction Surveys
- As-Built Surveys
- Control Surveys
- Dredging Surveys
- Telecommunication Surveys
- Right of Way/Easement/Route Surveys
- Pipeline Construction Surveys
- Pipeline As-built Surveys
- Pipeline Location Surveys
- Pipeline Depth of Cover Surveys
- Ports and Waterways Surveys

Recent Experience

After Hurricane Katrina, EMC was called upon by the New Orleans Corps of Engineers to provide surveying services for the rebuilding of the Hurricane Protection Systems through out southeast Louisiana. Some of our tasks included: surveying levee breaches, debris mapping in the cannels, locating pipelines, and levee construction surveys. After completing twenty eight emergency surveys, EMC was given a Certificate of Appreciation for the hard work and dedication of our professional staff.



Offices in Mississippi, Louisiana, Texas and Florida

Corporate Office: 2472 Sunset Drive, Grenada, MS 38901 • Phone: 662.226.5166 • Toll Free: 1.877.266.0362 • www.emcsurvey.com



Marsh Platforms

Some of our custom survey vehicles that are ready to handle any type of environment



MMI Marsh Master

Length 12.1', Width 7'4"

Track Width 24"

Approx. weight 3,100 pounds

Speed; 5MPH Land / 2MPH Water

37 HP Kubota Diesel



MMII Marsh Master

Length 14.6', Width 8'0"

Track Width 28"

Approx. weight 5,300 pounds

Speed; 8 MPH Land / 2 MPH Water

87 HP Detroit Diesel



Air Boat

Length 16' x 8'

GM 502 HP Engine

3-Blade Power shift Power

Plus Composite Prop



16' x 60" Skiff

Pro Drive Surface Drive Engine

35 HP Vanguard Engine

26-30 MPH

Spud Rods on both sides of boat

Offices in Mississippi, Louisiana, Texas and Florida

Corporate Office: 2472 Sunset Drive, Grenada, MS 38901 • Phone: 662.226.5166 • Toll Free: 1.877.266.0362 • www.emcsurvey.com



Vessels

Some of our custom survey vessels which are ready to handle any job



“Sea Scanner”

32' Armstrong Catamaran
Twin Yamaha 250 4-stroke engines
350 gallon fuel capacity / range 400 miles
Westerbeke 8.5 KW generator
Dual Coleman AC & Heater
1500 lb Hydraulic A-Frame



“Sea Beneath”

31' Scullys Aluminum Cabin Boat
Twin Yamaha 150 4-stroke engines
100 gallon fuel capacity / range 200 miles
Westerbeke 7 KW generator
Coleman AC & Heater



“Sounder”

28' Scullys Aluminum Cabin Boat
Twin Yamaha 115hp 4-Stoke engines
80 gallon fuel capacity / range 150 miles
Honda 6.5 KW generator
Coleman AC & Heater



“HYDRO II & III”

25' F&F Aluminum Cabin Boat
Twin Yamaha 90hp 4-stroke engines
80 gallon fuel capacity / range 150 miles
Honda 3500 watt generator
Coleman AC & Heater

Offices in Mississippi, Louisiana, Texas and Florida

Corporate Office: 2472 Sunset Drive, Grenada, MS 38901 • Phone: 662.226.5166 • Toll Free: 1.877.266.0362 • www.emcsurvey.com



Equipment

EMC is equipped to handle any size or type surveying project.

QTY	Make/Model	Description	QTY	Make/Model	Description
14	Topcon	1" 3000 Meter Range	8	2004 PolorCraft 18'	Skiff w/ Yamaha 4 Stroke 40hp
14	Trimble TSCE	TSCE Data Collector	1	2006 Tracker Boat	18' Boat
11	Trimble 4000 ssi	L1/L2 GPS Receivers	2	Pro Drive Mud Boats	36 hp Vanguard
12	Trimble 5700	L1/L2 GPS Receivers	1	CESSNA 182P	Single Engine Airplane
5	Trimble 5800	L1/L2 GPS Receivers	1	CESSNA P210 TURBO	Single Engine Airplane
5	Trimble 4000 se	L1 GPS Receivers	1	2007 Chevrolet 2500 LT	Duramax Diesel 4x4 Crew
10	Trimble R8 GNSS	L1/L2 GPS Receivers	3	2006 Chevrolet 2500 LT	4x4 Crew Cab
3	RTK Phone System	VRS (Pinpoint, Gulfnet)	7	2006 Chevrolet 2500	4x4 Crew Cab
12	Pacific Crest PDL	Radio Base Station	2	2006 Chevrolet 1500	4x4 Crew Cab
5	Pacific Crest Blue Brick	Radio Base Station	4	2009 Dodge 1500	Crew Truck
1	Trimble Trim Talk III	Radio Base Station	1	2007 Toyota Tacoma	4x4
16	SECO	2 meter Fixed Height Tripod	1	2007 Jeep Cherokee	4x4
2	Leica Wild 3000	1st Order level	1	2005 Jeep Liberty	4x4
1	Zeiss N1-1	1st Order level	6	Yamaha Rhino	4x4 Side by Side Utility
3	Zeiss N1-2	2nd or 3rd Order Level	1	Polaris Ranger	4x4 Side by Side Utility
9	Wild N1-2	2nd or 3rd Order Level	1	Kawasaki Mule	4x4 Side by Side Utility
4	Odom HydroTrac	Single Frequency	1	Artic Cat Prowler	4x4 Side by Side Utility
4	Odom Echotrac	Single Frequency	1	Marsh Masters I	Marsh Buggy
1	Innerspace 455	Single Frequency	1	Marsh Masters II	Marsh Buggy
5	Raytheon 719- C	Single Frequency	1	Ford	Mud Buggy
1	Raytheon 719- B	Single Frequency	2	Marks Airboat	15' Airboat
1	Odom HT 100	Single Frequency	21	Dell, Toshiba and HP	Laptop Computer
1	Reson 210	Single Frequency	7	Dell and HP	Scanners
1	Odom Mark II	Dual Frequency	12	Dell and HP	Printers
2	Odom Mark III	Dual Frequency	2	HP	Plotters
1	Reson 8101	Multibeam System w/210° option	12	Dell	Workstations
1	Reson 7101	Multibeam System w/210° option	1	Autodesk AutoCAD 2009	Software
1	Odom ES3	Multibeam System	2	ArcGIS 9.2	Software
2	Reson 8101	High Frequency Sidescan	1	TGO	Software
1	Reson 7101	High Frequency Sidescan	12	MicroStation V8	Software
1	Klein 3000	100-500 KHZ Duel Frequency Sidescan	6	MicroStation V8i	Software
1	Klein 3900	500-900 KHZ/Duel Frequency Sidescan	6	Inroads V8i	Software
1	Sea Spy	Marine Magnetics Magnetometer	3	Inroads Site	Software
2	Trimble POS MV	Ver 4 Positioning/ Motion system RTK	1	Vista Map	Software
1	TSS DMS 05	Motion Sensor	1	Office 2007	Software
1	Hemisphere Heading	DGS Receiver/ Heading/Roll	10	Hypack Max Keys	Software
7	Trimble DSMPRO	Navbeacon Receiver	3	Hypack Sweep Keys	Software
3	Trimble Ag132	DGPS Receiver	4	Chesapeake Sonar Wiz Map	Software
2	Trimble Ag232	DGPS Receiver	2	SonarPro	Software
1	CNAV	WAAS/ SAT Correction Receiver	1	GeoDAS Desktop	Software
1	2008 Armstrong 32'	Allum. Catamaran 2 250hp	1	Triton Isis Suite	Software
1	2005 Scullys 28'	Allum. cabin 2-4 stroke 150	1	IVS Fledermaus	Software
1	2005 Scullys 26'	Allum. cabin 2-4 stroke 115	1	Caris Hips & Sips	Software
2	1994 F&F 25'	Allum Cabin / 2-4-stroke 90hp	1	Riegl VZ-400	Terrestrial/Mobile Laser Scanner

Offices in Mississippi, Louisiana, Texas and Florida

Corporate Office: 2472 Sunset Drive, Grenada, MS 38901 • Phone: 662.226.5166 • Toll Free: 1.877.266.0362 • www.emcsurvey.com



*Specialist in Hydrographic, Topographic
and GPS Data Development*

www.emcsurvey.com



Corporate Office
2472 Sunset Drive
Grenada, MS 38901
Phone: 662.226.5166
Toll Free: 877.266.0362

Offices in Mississippi, Louisiana, Texas and Florida